



# Seaful

## LUNDY MARINE HABITATS

### AIMS

Develop a sense of excitement and curiosity about the marine life at Lundy and find out why this Marine Protected Area is so unique and important...

## KS3 LESSON PLAN

### Learning outcomes

Linked to **SCIENCE: Living things and their habitats**

Recognise that living things can be grouped in a variety of ways. Explore and use specification systems to help group, identify and name a variety of living things in the local and wider environment. Recognise that environments can change and that this can sometimes pose dangers to living things.

### RESOURCES

- Lundy Film (<https://youtu.be/A6tYCGazFsA>)
- Printed maps (one per learner)
- Printed species cards (one set/group of 10 learners)
- Printed grouping sheets (one set/group of 10 learners)
- Classification crib sheet (for teacher use only)
- Scissors
- Colouring pencils/pens

### KEY VOCABULARY

**SPECIES CLASSIFICATION**  
**HABITATS AND MICROHABITATS**  
**MAMMAL, CRUSTACEAN, MOLLUSC,**  
**CNIDARIAN**  
**HUMAN IMPACTS**  
**MARINE PROTECTED AREA**

### ACTIVITIES

#### PART ONE : MARINE MAPPING (30 minutes)

- Give each learner a printed map.
- Watch the Lundy film and ask learners to draw onto the map: the locations of different marine habitats; the names of marine species and where they're found; and any oceanographic details (sea conditions/ water bodies/currents etc.) that they learn about. Pause film and prompt, as necessary.
- N.B. If more time, get the learners to decorate and design their maps in a more detailed way.

#### PART TWO: LUNDY MARINE SPECIES CLASSIFICATION: (30 minutes)

- Split the learners into groups of approx 10 and give each group a set of printed species cards and grouping sheets.
- Ask the learners to cut out the species cards and divide them amongst themselves (one each).
- Each learner must describe and name their own species and what larger group of plants/animals they belong to (use crib sheet where needed)
- Get the groups to lay out the grouping sheets in the middle of the group, one at a time, and try and sort the species into the various groups by placing individual cards in the correct circles (again use crib sheet where needed).
- Ask the group to discuss what the human impacts are on these species, which might be most at risk and why?

#### PART THREE: DEBATE (30 minutes)

- Use the questions in the evaluation section (below) to guide a whole group discussion, with break out groups where required.
- Create lists of positive and negative impacts on the Lundy marine environment.

### EVALUATION

To reflect on the learning, ask the following questions and discuss:

1. Why is Lundy so special?
2. How do humans negatively and positively impact the Lundy marine environment?
3. What can WE do to help protect Lundy?

### CROSS-CURRICULAR LINKS

**GEOGRAPHY:** - Locational and directional language (N, S, E and W)  
- Identifying oceans - Contextual knowledge of globally significant places

### EXTENSION

Visit your local seashore and observe some marine species in situ

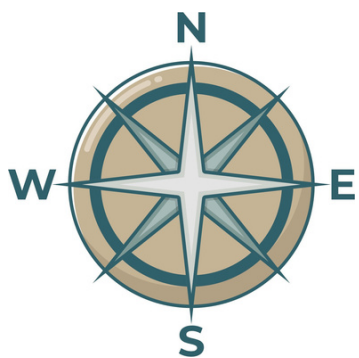
### FIND OUT MORE...

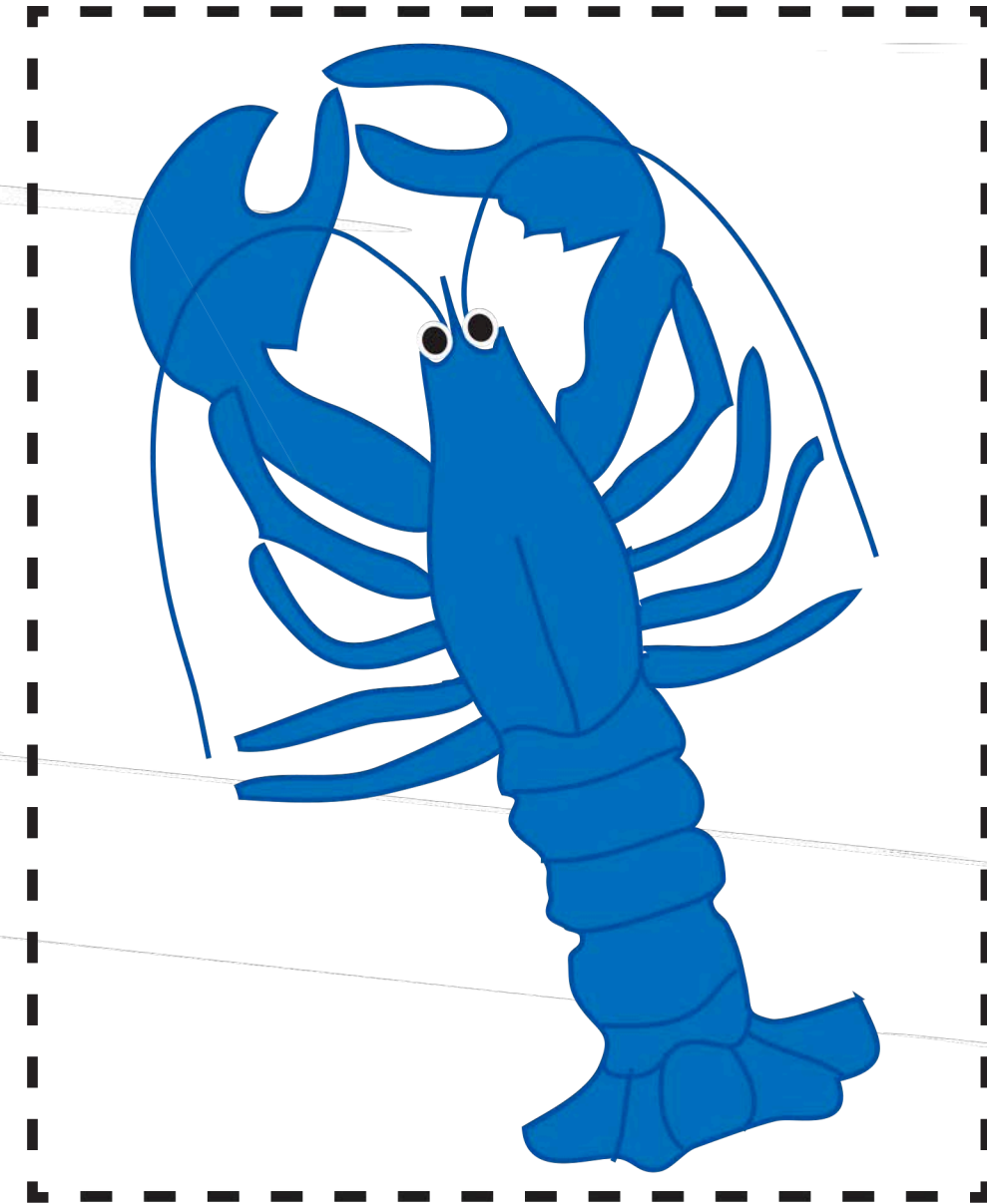
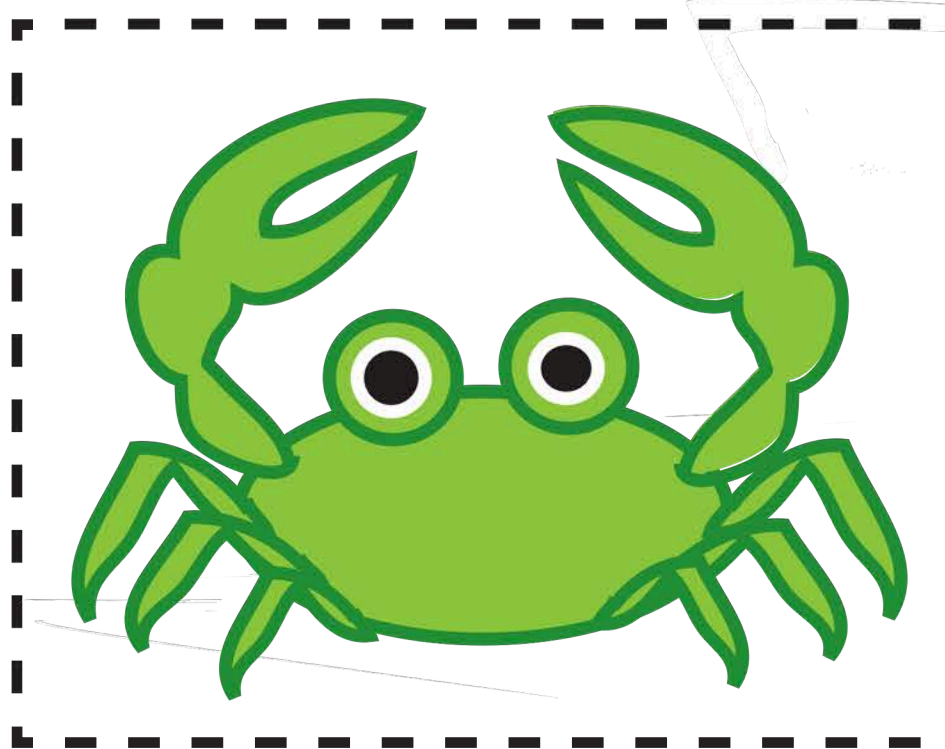
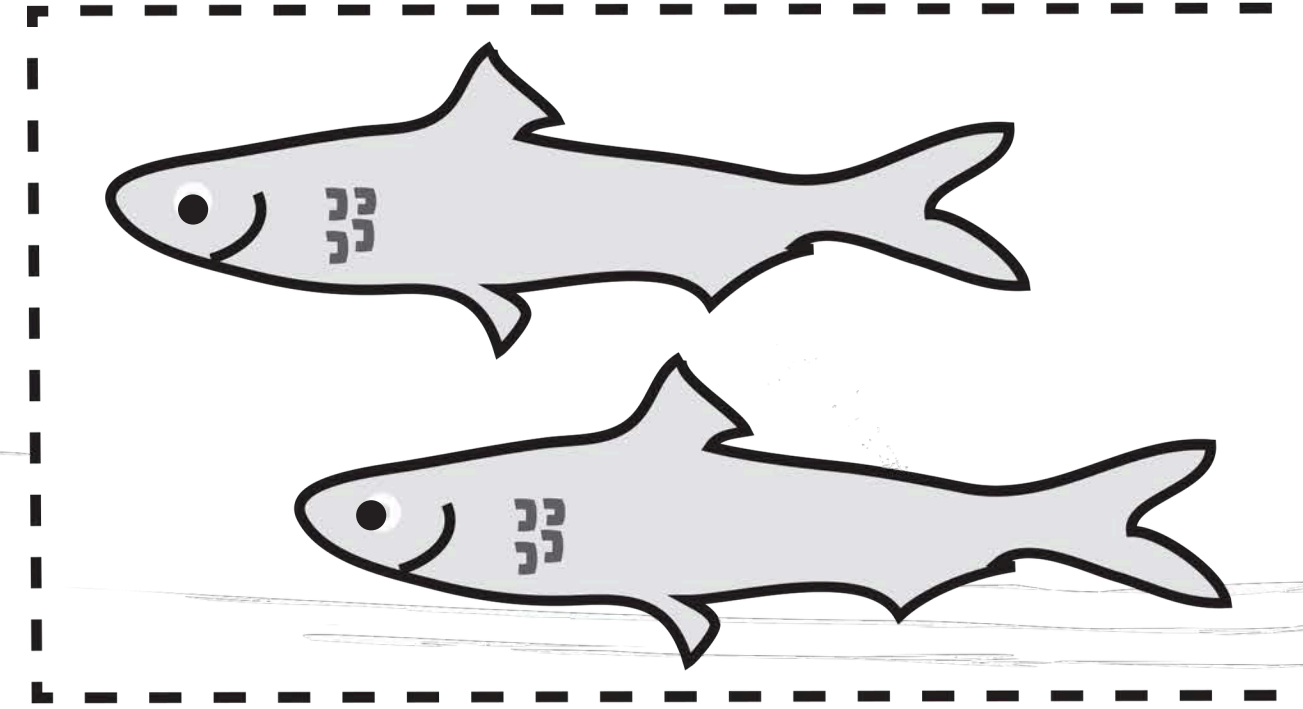
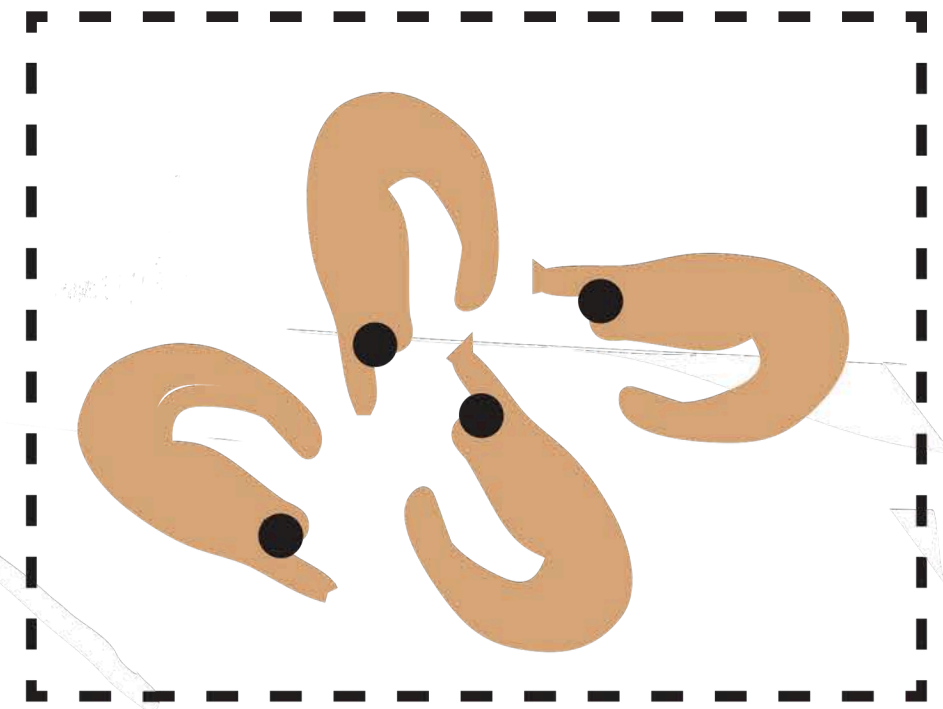
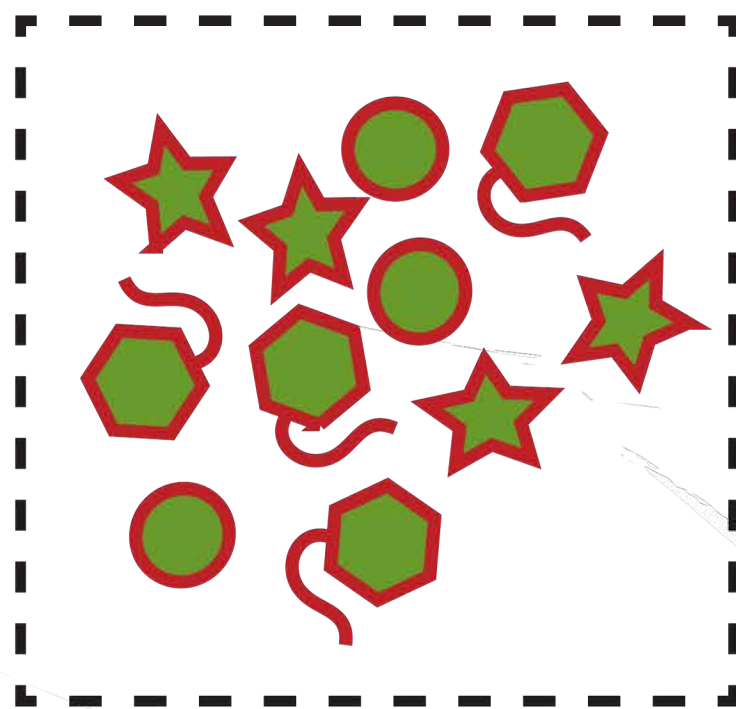
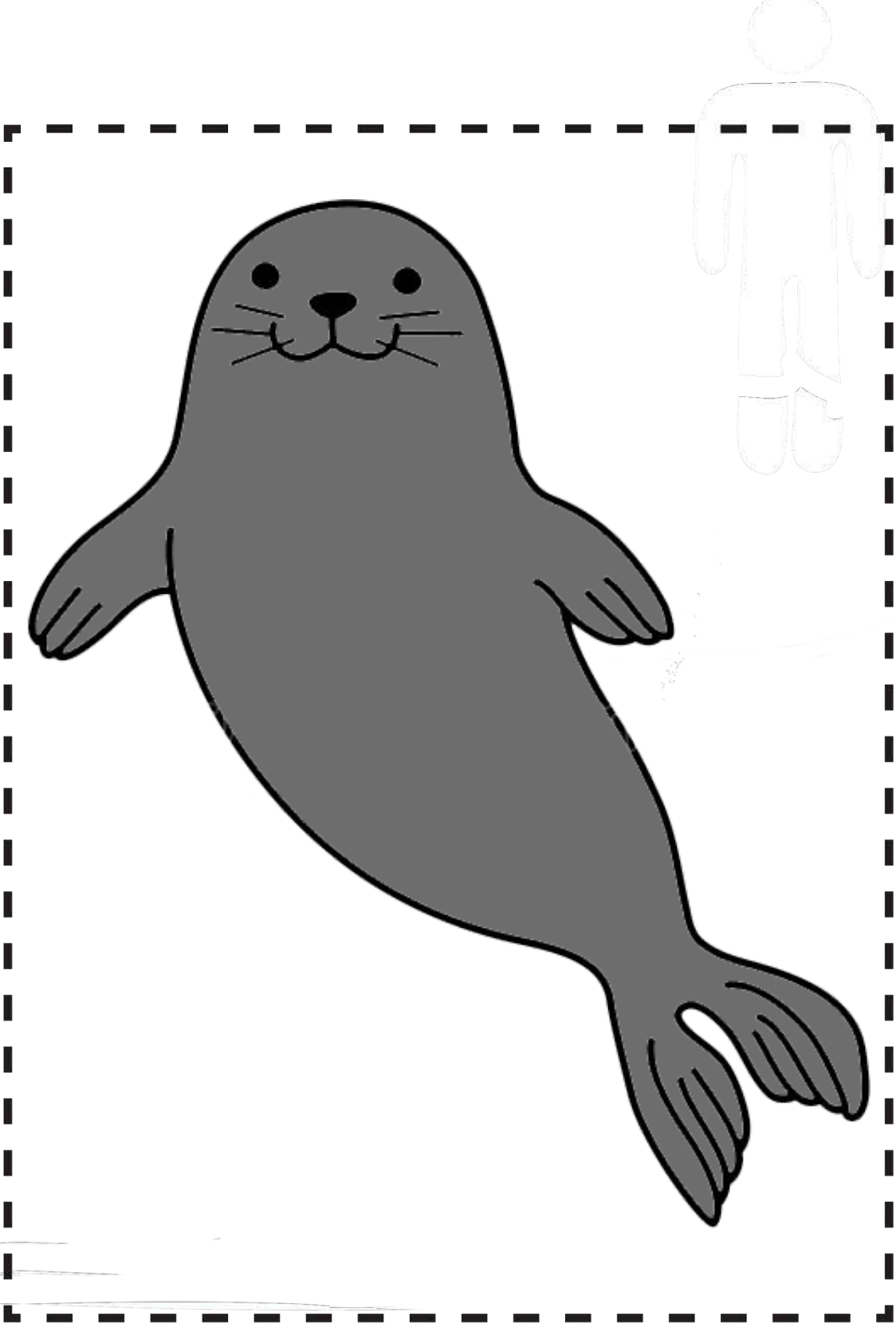
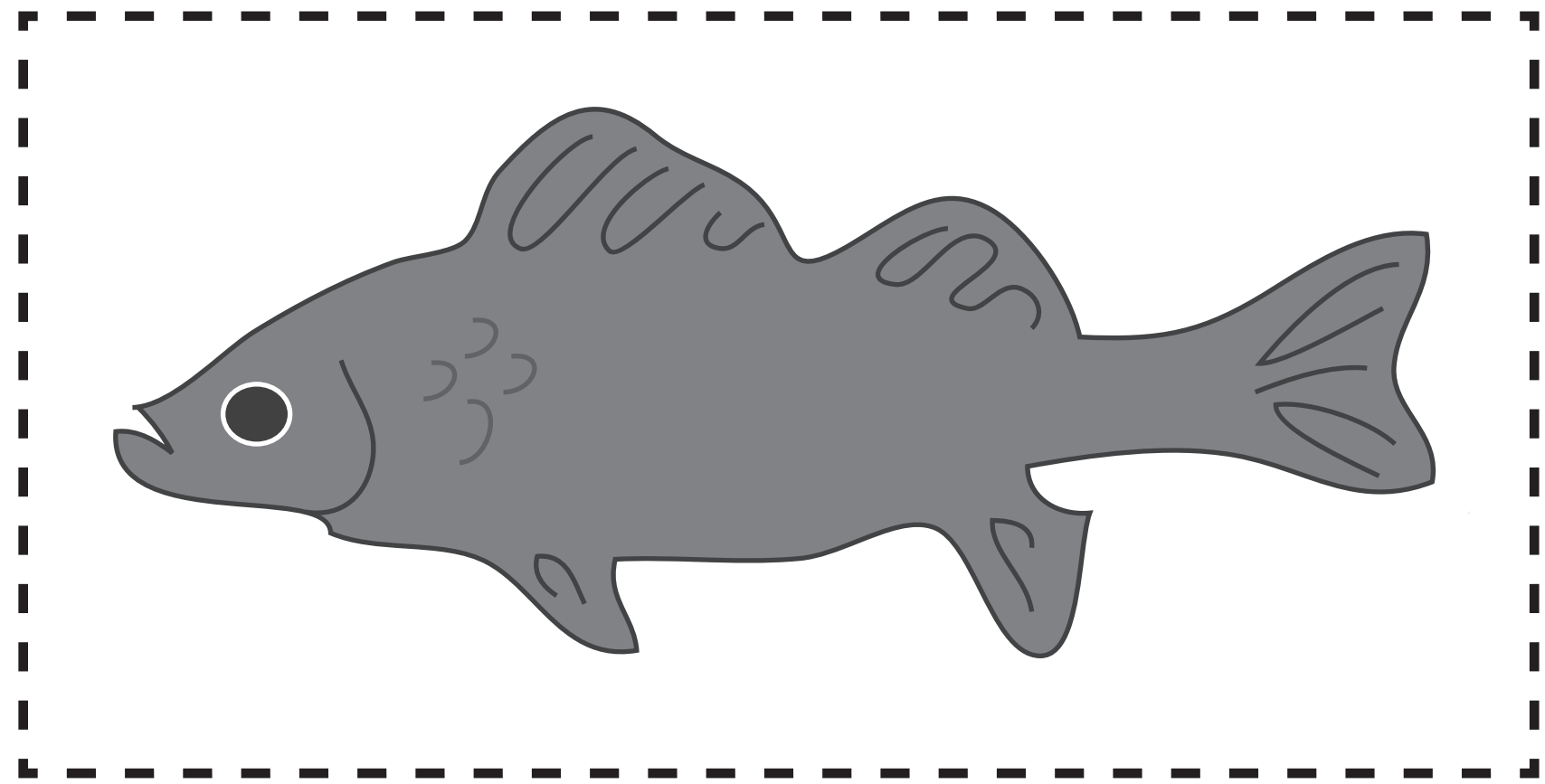
[www.landmarktrust.org.uk/lundyisland](http://www.landmarktrust.org.uk/lundyisland)  
[www.mcsuk.org/ocean-emergency/marine-protected-areas](http://www.mcsuk.org/ocean-emergency/marine-protected-areas)  
[www.seaful.org.uk](http://www.seaful.org.uk)

# LUDY MAP



*Seaful*





# GROUPING SHEET 1: MARINE HABITATS



Put the species cards in their correct habitat...  
Discuss how each creature is adapted to that type of habitat...

*Deep sea*

*Rocky reef*

*Seabed*

*Inshore waters*

*Sea surface*

# GROUPING SHEET 1: MARINE LIFE GROUPS



Which group does your species belong to?  
What features are common to species of the same group?

**Mammals**

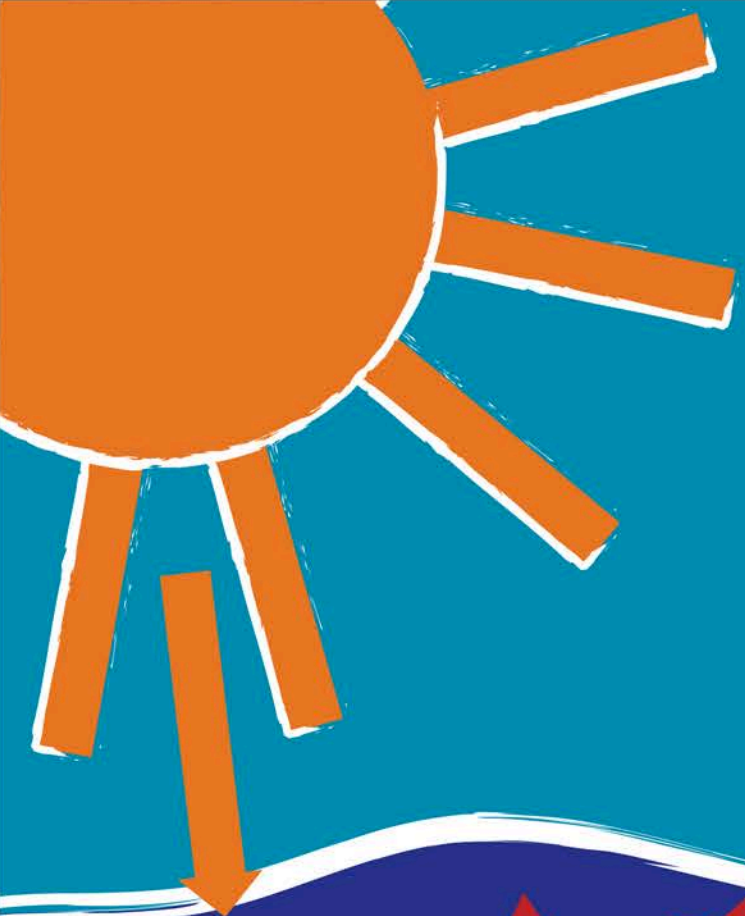
**Molluscs**

**Crustaceans**

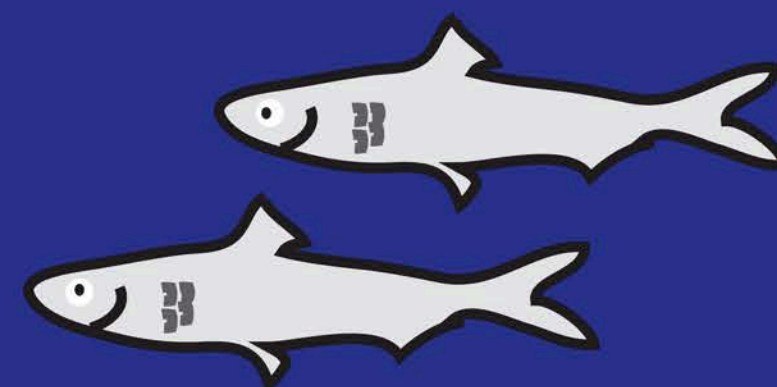
**Plants**

**Cnidarians**

**Fish**



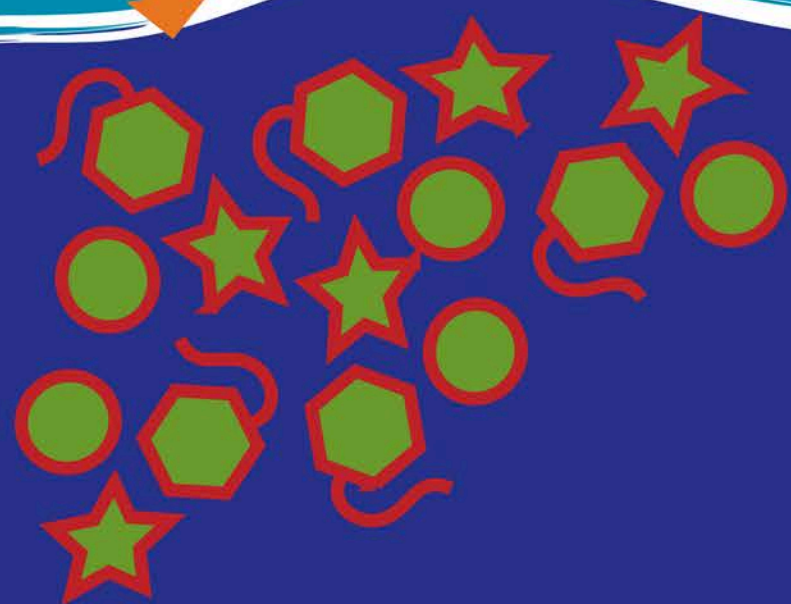
Name: Grey seal  
Group: Mammal  
Habitat: Deep sea and sea surface



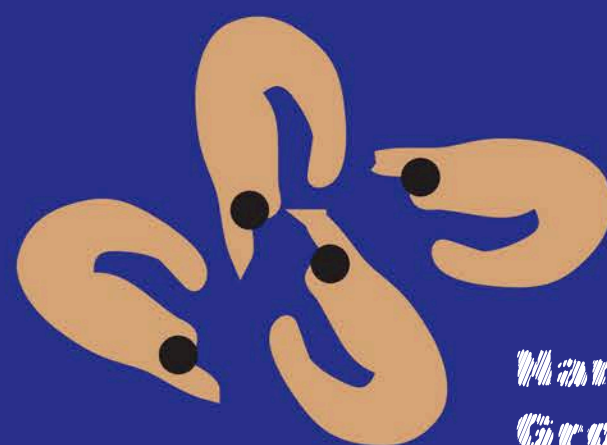
Name: Pilchards  
Group: Fish  
Habitat: Inshore waters



Name: Bass  
Group: Fish  
Habitat: Deep sea

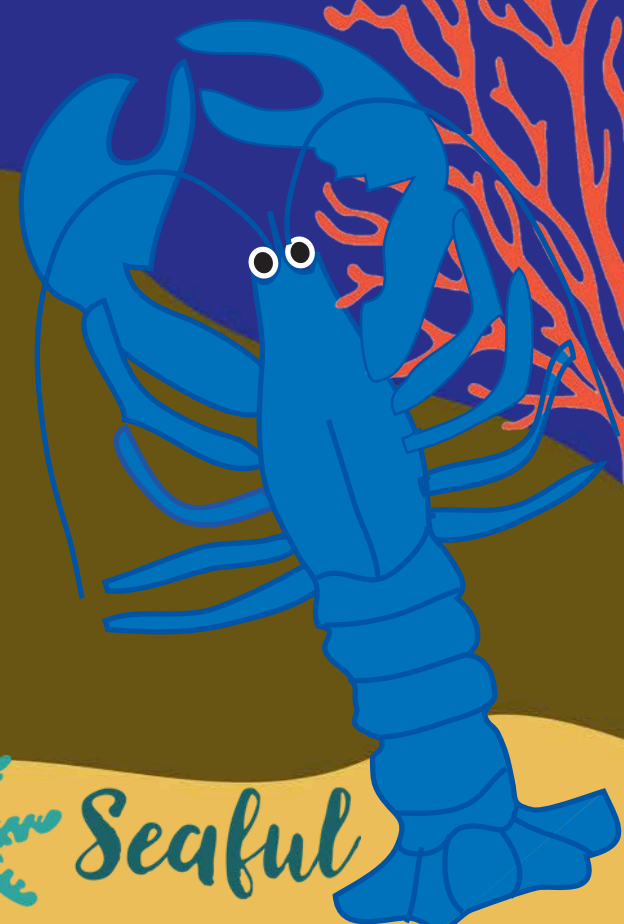


Name: Plankton  
Group: Plant  
Habitat: Sea surface



Name: Shrimps  
Group: Crustacean  
Habitat: Inshore waters

Name: Lobster  
Group: Crustacean  
Habitat: Rocky reef



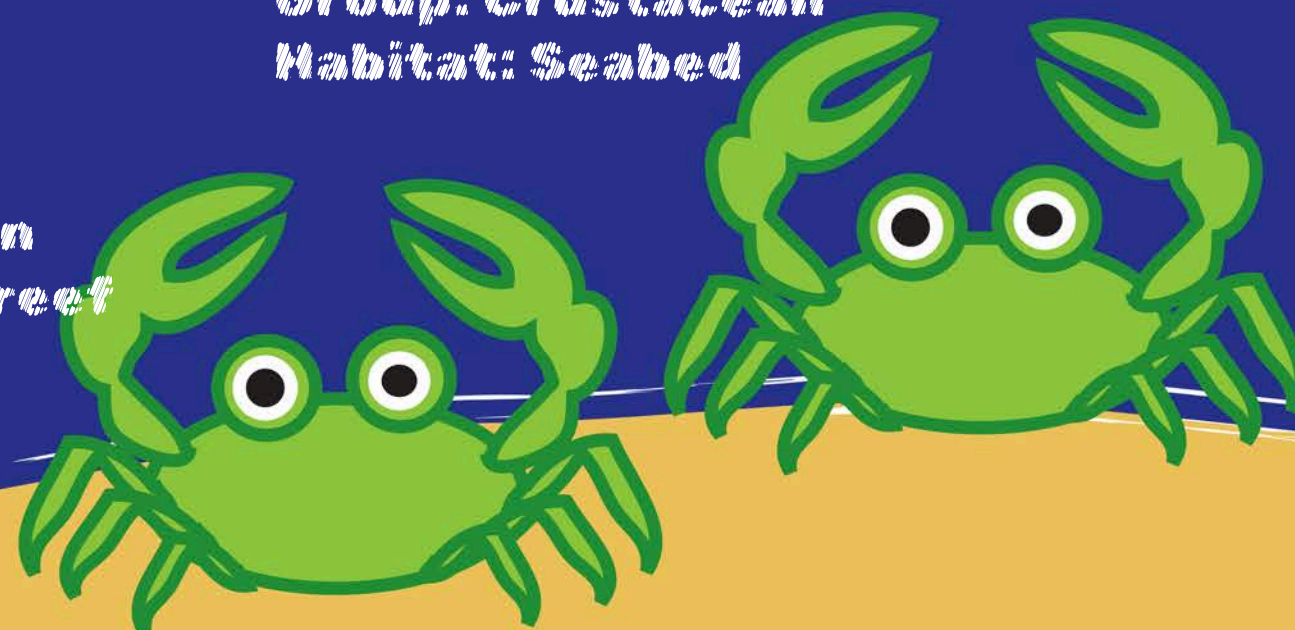
Name: Sea fan  
Group: Cnidarian  
Habitat: Rocky reef



Name: Anemone  
Group: Cnidarian  
Habitat: Rocky reef



Name: Shore crab  
Group: Crustacean  
Habitat: Seabed



Name: Seaweed  
Group: Plant  
Habitat: Seabed

